

**Министерство образования Российской Федерации  
Волгоградский государственный архитектурно-строительный университет**

# **ДИЗАЙН ИНТЕРЬЕРА И ЭКСТЕРЬЕРА ЗДАНИЙ**

## **MODERN EXTERIOR AND INTERIOR DESIGN**

**Учебное пособие**

**Составили О.Н. Романова, М.К. Корецкая**

**Волгоград  
ВолгГАСУ  
2014**



**© Федеральное государственное бюджетное  
образовательное учреждение  
высшего профессионального образования  
«Волгоградский государственный  
архитектурно-строительный университет», 2014**

УДК 747(075.8)  
ББК 85.110.5я73  
Д448

Р е ц е н з е н т ы:

*Н.А. Вишневецкая*, кандидат педагогических наук, доцент кафедры ЛиМК ВолгГАСУ;  
*Е.В. Суркова*, кандидат филологических наук, доцент кафедры ЛиМК ВолгГАСУ

С863 **Дизайн** интерьера и экстерьера зданий = Modern exterior and interior design [Электронный ресурс]: учебное пособие / М-во образования и науки Рос. Федерации, Волгогр. гос. архит.-строит. ун-т; сост. О.Н. Романова, М.К. Корецкая. — Электронные текстовые и графические данные (4,6 Мбайт). — Волгоград : ВолгГАСУ, 2014. — Учебное электронное издание сетевого распространения. Систем. требования: PC 486 DX-33; Microsoft Windows XP; Internet Explorer; Adobe Reader 6.0. — Официальный сайт Волгоградского государственного архитектурно-строительного университета. Режим доступа: <http://www.vgasu.ru/publishing/on-line/> — Загл. с титул. экрана.

ISBN 978-5-98276-668-7

Оригинальные неадаптированные тексты, посвященные дизайну интерьеров различных видов зданий, а также ландшафтному дизайну, используются с целью развития навыков чтения и перевода научно-технической литературы по специальности.

Для студентов 2-го курса архитектурных специальностей.

УДК 747(075.8)  
ББК 85.110.5я73

ISBN 978-5-98276-668-7



© Федеральное государственное бюджетное образовательное учреждение высшего профессионального образования «Волгоградский государственный архитектурно-строительный университет», 2014

## Content

1. Landscaping	4
2. Interiors of public buildings	15
3. Modern tendencies in interior design of residential houses	23
4. Color, textures and materials in interior design trends 2013	33
5. Design of industrial buildings	40

## 1. LANDSCAPING

Landscaping refers to activity that modifies the visible features of an area of land, including:

1) living elements, such as flora and fauna (for example figures in the form of animals from plants); or what is commonly referred to as gardening, the art and craft of growing plants with a goal of creating a beautiful environment within the landscape.

2) natural elements such as landforms, terrain shape and elevation, or bodies of water;

3) human elements such as structures, buildings, fences or other material objects created and/or installed by humans;

4) abstract elements such as the weather and lighting conditions.

Landscaping is both science and art, and requires good observation and design skills. A good landscaper understands the elements of nature and construction and blends them accordingly.

Philosophers in the 17<sup>th</sup> century debated whether visual beauty was a necessary goal of landscaping.

Landscape architecture is a multi-disciplinary field, incorporating aspects of: botany, horticulture, the fine arts, architecture, industrial design, geology and the earth sciences, environmental psychology, geography, and ecology. The activities of a landscape architect can range from the creation of public parks and parkways to site planning for campuses and corporate office parks, from the design of residential estates to the design of civil infrastructure and the management of large wilderness areas or reclamation of degraded landscapes such as mines or landfills. Landscape architects work on all types of structures and external space – large or small, urban, suburban and rural. The most valuable contribution can be made at the first stage of a project to generate ideas with technical understanding and creative flair for the design, organization and use of space. The landscape architect can conceive the overall concept and prepare the master plan, from which detailed design drawings and technical specifications are prepared.

In some states, provinces, such as Ontario, Canada and Santa Barbara, California, all designs for public space must be reviewed and approved by licensed landscape architects.

Landscape architecture is the design of outdoor public areas, landmarks and structures to achieve environmental, social-behavioral or aesthetic outcomes. It involves the systematic investigation of existing social, ecological and geological conditions and processes in the landscape, and the design of interventions that will produce the desired outcome.



The scope of the profession includes: town or urban planning; environmental restoration; parks and recreation planning; visual resource management. A practitioner in the profession of landscape architecture is called a landscape architect. The project of the park was designed by architects Frederick Law Olmsted and Calvert Vaux later founded a large Prospect Park in Brooklyn. Despite the fact that the park looks very natural, almost all landscapes are created manually. The park has several artificial lakes, a large number of paths, two ice-rinks, beautiful landscapes and wildlife, and lawns that are used for different sports, as well as children's playgrounds and a zoo. The park migratory birds fly, and so it is very popular with birdwatchers. 10-km road that surrounds the park, often used by joggers, bikers and inline skating enthusiasts, especially on weekends and after 7 p.m., when automobile traffic is prohibited. Central park is often called the green lungs of Manhattan.



In Russia the art of landscape design is not as developed as in other countries. The variety of the professional tasks that landscape architects and examples of project types:

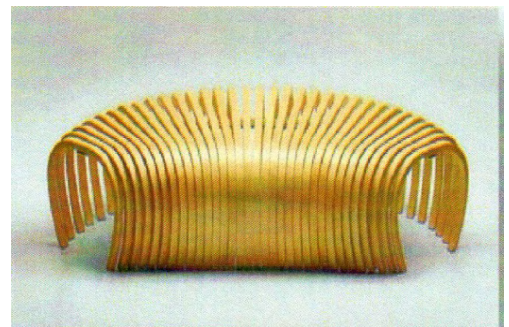
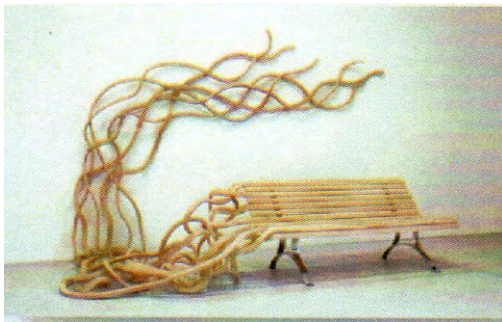
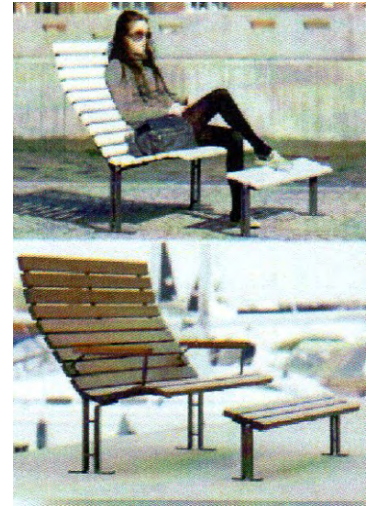
- a. The planning, form, scale and sitting of new developments;
- b. Civil design and public infrastructure;
- c. Sustainable development;
- d. Campus and site design for public institutions and government facilities;
- e. Parks, botanical gardens, arboretums, nature preserves;
- f. Recreation facilities; i.e.: playgrounds, golf courses, theme parks and sports facilities;
- g. Housing areas, industrial parks and commercial developments;
- h. Highways, transportation structures, bridges and transit corridors;
- i. Urban design, town and city squares, waterfronts, pedestrian schemes and parking lots;
- j. Natural park, tourist destination, and recreating historical landscapes and historic garden appraisal and conservation studies;
- k. Reservoirs, dams, power stations;

An integral part of landscape architecture is the Street furniture. Street furniture is a collective term (used mainly in the United Kingdom) for objects and pieces of equipment installed on streets and roads for various purposes. It includes benches, bollards, post boxes, phone boxes, streetlamps, traffic lights, traffic signs, bus stops, tram stops, taxi stands, public lavatories, fountains, watering troughs,

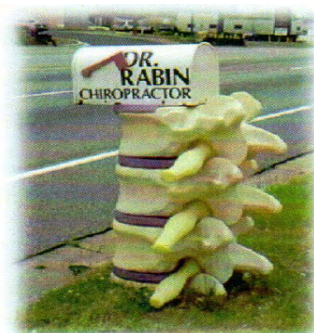


memorials, public sculptures. An important consideration in the design of street furniture is how it affects road safety.

A **bench** is essentially a chair made for more than one person, usually found in central parts of settlements (such as plazas and parks).

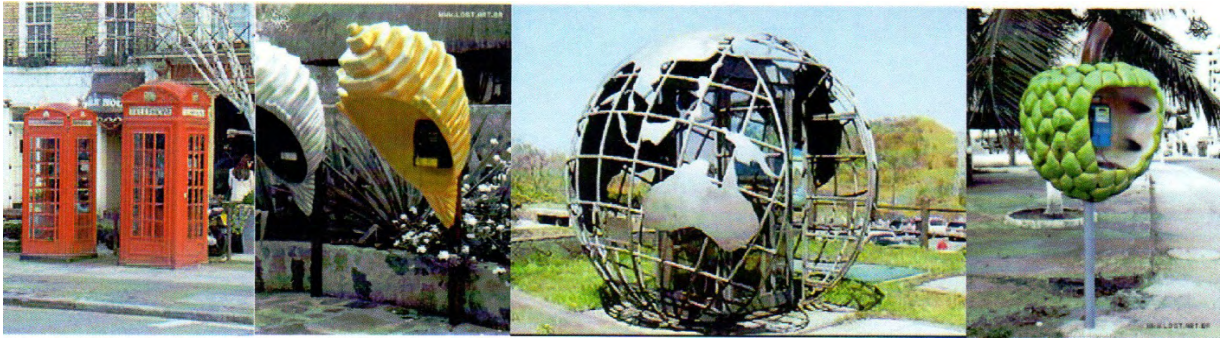


**Bollards** are posts, short poles or pillars with the purpose of preventing the movement of vehicles onto sidewalks or grass.

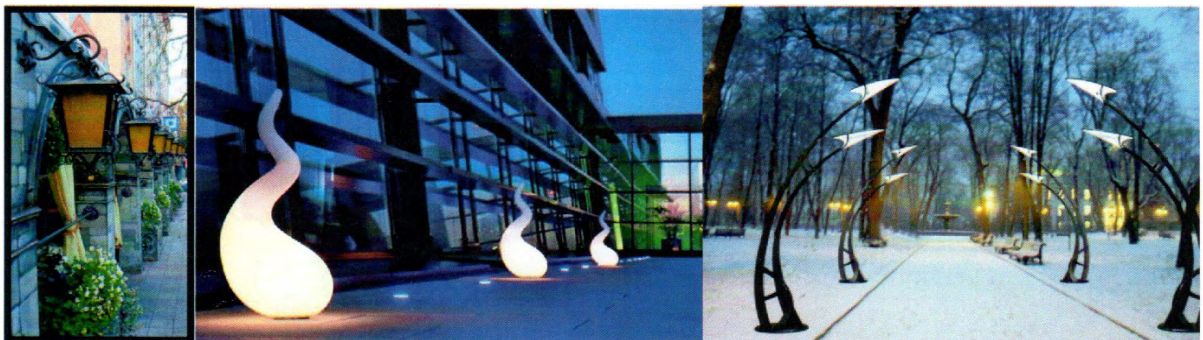


**Post boxes**, also known as mail boxes, are found throughout the world, and have a variety of forms. **Phone boxes** or telephone booths are prominent in most cities.





*Streetlamps* are designed to illuminate the surrounding area at night, serving not only as a deterrent to criminals but more important to allow people to see where they are going. The color of streetlamps bulbs differ, but generally are white or yellow.



*Traffic lights* usually include three colors: green to represent “go”, amber to inform drivers that the color will alternate shortly, and red to tell drivers to stop. They are generally mounted on poles or gantries or hung from wires. But there are more original.



*Traffic signs* warn drivers of upcoming road conditions, speed limits, etc. There are signs for pedestrians.





*Public lavatories* allow pedestrians the opportunity to use restroom facilities, either for free or for a fee.



Street furniture itself has become as much a part of many nations' identities as dialects and national events, so much so that one can usually recognize the location by their design; famous examples of this include:

- a. The red telephone boxes of Britain;
- b. The residential mail boxes of the United States;
- c. The streetlights and metro entrances of Paris.

The Tiergarten park in Berlin has a collection of antique streetlamps from around the world, both gas and electric.



Since most items of street furniture are of a utilitarian nature, authorities generally keep them up-to-date and replace them regularly (usually to conform to regulations, safety codes, etc.) Because of this, old, outdated, obsolete or even non-functional street furniture can be rare sights.

Street furniture is often used for advertising. In Europe there is a heavy competition for public spots to do advertising in different poster formats since these spots generate high contact figures — means many people can possibly remember a presented advertising message on a major road or square.

The presentation of this advertising has to fit in the overall urban planning rules of cities and their architecture. These requirements lead to interesting design approaches for poster presentation in different formats.

*1. Read the words to help you with the text:*

**Landscaping** – ландшафтный дизайн

**To modify** - изменять

**A feature** - особенность

**Flora and fauna** – флора и фауна

**Craft** - ремесло

**Environment** – окружающая среда

**Terrain** - почва

**A fence** - забор

**A human** - человек

**To install** - устанавливать

**To observe** - наблюдать

**Skills** - навыки

**Horticulture** - садоводство

**Geology** - геология

**Landfills** - свалки

**Urban** - городской

**Suburban** - пригородный

**Rural** - сельский

**Master plan** – ген.план

**Drawings** - чертежи

**To create** - создавать

**Lawns** - лужайки

**To prohibit** - запрещать

**Arboretums** - дендрарии

**Nature preserves** - заповедники

**A pedestrian** - пешеход

**Equipment** - оборудование

**A bench** - скамейка

**Bollards** - блокираторы

**Post boxes – почтовые ящики**

**Streetlamps - фонари**

**Traffic lights - светофоры**

**Traffic signs – дорожные знаки**

**Public lavatories – общественные туалеты**

**Fountains - фонтаны**

**Sidewalks - тротуары**

**To prevent - предотвращать**

**Free - бесплатный**

**For a fee – за плату**

**Antique - старинный**

**Furniture - мебель**

**Transparent - прозрачный**

## ***2. Translate into Russian these family words:***

Architect – architecture – architectural; to elevate – elevation; to install – installation; to observe – observation; to design – designing – designer; to create – creation; to equip – equipment; to prevent – preventing; to surround – surrounding – surroundings; to advertise – advertising – advertisement (ads).

## ***3. Find the English equivalents to the following Russian words in the text:***

Ландшафтная архитектура, ландшафтный архитектор (дизайнер), флора и фауна, искусство и ремесло, выращивать растения, рельеф, водоем, забор, внимательность и навыки проектирования, создание общественных парков, проектирование жилых комплексов, выдвинуть идею, чертежи и спецификации, все проекты должны быть одобрены, желаемый результат, парк выглядит естественно, создан руками человека, искусственные озера, тропинки, пешеходы и велосипедисты, дендрарии и заповедники, места для отдыха, малые архитектурные формы («уличная мебель»), освещение окрестностей, предотвратить движение транспорта на тротуарах или газонах, соответствовать требованиям безопасности, интересный дизайнерский подход, подписывать долгосрочные контракты.

## ***4. Answer the following questions to the text:***

1. What does landscaping activity modify? What elements does it change?
2. What subjects (sciences) does landscape architecture incorporate?



3. What is a landscape architect?
4. What is the best example of landscape architecture in New-York?
5. Is it natural or manual?
6. What elements does it include?
7. Is the Street furniture the integral part of landscaping architecture?
8. What objects does Street furniture incorporate?
9. Street furniture is naturally identical, isn't it?
10. What requirements are there for outdoor advertisement?

**5. Match the names with their definition:**

<i>A bench</i>	<i>Facilities to illuminate the surrounding area</i>
<i>Bollards</i>	<i>Activity in an area of land that modifies the visible features, including living, natural, human and abstract elements</i>
<i>Post boxes</i>	<i>Allow pedestrians the opportunity to use restroom facilities.</i>
<i>Streetlamps</i>	<i>A chair, made for more than one person in central parts of settlements</i>
<i>Traffic lights</i>	<i>A multi-disciplinary field, designing of outdoor public areas, landmarks and structures</i>
<i>Traffic signs</i>	<i>Facilities to control the movement of people and cars or to stop them</i>
<i>Public lavatories</i>	<i>Facilities to warn drivers and pedestrians</i>
<i>Landscaping</i>	<i>Posts, short poles, or pillars to prevent the movement of vehicles onto sidewalks or grass</i>
<i>Landscape architecture</i>	<i>A person who blends accordingly the elements of nature and construction</i>
<i>Landscape architect</i>	<i>Mail boxes, having a variety of forms</i>

**6. Agree or disagree with your partner, begin your phrase with “That’s right” or “That’s wrong”:**

1. Red telephone boxes are referred to the USA.
2. Landscape architecture deals with only Botany.
3. Landscape design in Russia is highly developed.
4. Street furniture is an important consideration in landscaping design.
5. Old street elements should be remained as sights.
6. Outdoor advertisement doesn’t refer to street furniture.
7. Landscape designing includes organizing parks, gardens, embankments, parking, squares etc.

**7. Complete the following sentences:**

1. Landscaping refers to activity that ...
2. Landscape architecture is a multi-disciplinary field ...
3. The activities of a landscape designer (architect) can range from ...
4. The most valuable contribution can be made at ...
5. The professional tasks that landscape architects should do are ...
6. Street furniture includes ...
7. Bollards are posts, short poles or pillars with the purpose of ...
8. Streetlamps are designed to serve ...
9. The presentation of the advertisement has to fit ...

**8. Fill in the blanks with necessary prepositions:**

1. Landscaping is ... science ... art, incorporating the aspects ... Botany, Architecture, Geology, Geography, Ecology etc.
2. The activities of landscape architect can range ... the creation of public parks ... campuses and ... residential estates ... civil infrastructure.
3. In some states all designs must be approved ... licensed landscape architect.
4. 10 km road in the park is often used ... weekends ... 7 p.m.
5. Despite ... the fact that the park looks natural, it is created manually.
6. In Russia, the art of landscape design is not ... developed ... in other countries.
7. Street furniture is installed ... streets and roads for various purposes.
8. Public lavatories provide pedestrians ... necessary facilities ... free ...  
...a fee.
9. The requirements ... outdoor advertisement lead ...interesting design approaches ... poster presentation ... different formats.

***9. Guess what is spoken about:***

1. Posters in the streets or roads the aim of which is to make people buy something.
2. A special facility in the street of different colors that allows people to see where they are going.
3. Street facility including three colors.
4. A facility for some people to sit on.
5. The element of street furniture to connect with other people.
6. The activity that modifies the visible features of an area of land, including living, natural, human and abstract elements.
7. A multi-disciplinary field, incorporating aspects of Botany, Geology, Geography, Ecology etc.



8. A person who works on all types of structures and external space (urban, suburban, rural) and conceives the overall concept and prepares the master plan of a design.

*10. Fill in the table with the words taken from the text:*

<i>Participle 1</i>	<i>Participle 2</i>	<i>Gerund</i>	<i>Verbal Noun</i>	<i>Infinitive</i>

*11. Retell the text by heart.*

## 2. INTERIORS OF PUBLIC BUILDINGS



Nowadays the way of modern life makes people to spend most of the time outside of their homes. The work occupies a significant portion of the personal space, a place of business and personal meetings are increasingly becoming a café, a restaurant. People can't get away from constant visits to shopping malls,

beauty salons, fitness clubs, etc. At the same time everybody has the natural desire to be in an atmosphere of comfort and beauty all the time. That is why design of public buildings is thought to be the most difficult area of modern design.

Design of public spaces requires thoughtful action of highly qualified people working on a specific project. The design of public spaces requires careful work on everything: engineering services, security, the maximum loading for future space, the use of certain materials, etc. Add to this the need for aesthetic appeal, in other words — the creation of original, unique interior public spaces and we'll get a very complex time-consuming work. Success of business depends largely on the design of public spaces, which must be profitable and workable, so before you begin to design some public space, you should make a deep analysis of scope of action, in which a particular public space is used.

And if the interior design of apartments and houses is based on creating a comfortable and cozy space, the development of public space focuses on functionality. Another fundamental difference — is the limitation in the choice of style. For example, a design project of a manager's office can't be executed in the style of luxury Baroque. But this does not mean that the room should be boring and similar to others. This is the main task for the architect when he designs public space.

### **The interior design of restaurants and cafes**



In the interior design of restaurants and cafes the main attention is paid to the relationship of style and cuisine. The interior must be unique, with a clear delineation of zones. At the same time, design theme should also be closely connected with the atmosphere and cuisine of coffee shop or restaurant. For the project of catering establishments is used typical stylization.



For example, in restaurants may be used details that typical for a real British pub or the Italian pizzeria, and many other stylizations. Great attention is paid to lighting. The cafes or restaurants usually have central light and small lamps of different types for each table.



## **The interior design of beauty salons and SPA-centers**



For what purpose does a person visit beauty salon and SPA? His main aim is to change the image and rest from the daily problems. That is why, the space of salons is filled with light and air. Visitors must have a rest, so all furnishings have simple shapes and colors are calm. The style of SPA can be described as minimalism.



But clear graphic lines are replaced with smooth and easy ones. Proper zoning of floor space, insulation and properly selected music can completely turn people away from everyday life. The uniqueness of the design can be highlight by unusual elements, particularly in bright colors. It can be a vase of unusual shape for example.

## **The interior design of office spaces**

The workplace should be comfortable and functional. For office it is typical the difference between a minimum of distractions (possible location of personal belongings depends on the rules of organization) and the optimal use of floor space. If we are talking about top manager's office, the office furniture should be elite class, selected in accordance with the taste of the manager. If the question is about the design of large rooms for the staff, the design would be more typical. This does not prevent a designer to create comfortable space, equipped with all the necessary elements. Nowadays in offices are used popular methods of symbolic division of space into separate space of public employment. For this purpose, designers often use glass walls and partitions that do not reach the ceiling. In some cases it is necessary to arrange soundproof, isolated rooms.





Current trends in interior of public spaces are also affected by fashion as a way of life of people. However, the professional design of public buildings should strictly comply with the ergonomics and functionality. Only in this case, the well-engineered public interior can achieve a long-lasting popularity. The original color scheme will attract visitors and comfort brings pleasure. Creating of interior of a public building requires an integrated approach that includes not only the choice of styles, colors and materials for decoration, but also the organization of internal space and communication space. In addition, the development of the interior of public buildings has to accommodate the needs of visitors, such as children, the disabled and the elderly. That is why the creating of interior of public buildings is considered to be one of the most complex fields of modern design.

*1. Read the words to help you with the text:*

**To occupy - занимать**

**Significant - значительный**

**To become - становиться**

**Shopping mall – торговый центр**

**Desire - желание**

**Design – проект(ирование)**

**Space - пространство**

**To require - требовать**

**Loading - нагрузка**

**Aesthetic - эстетический**

**To create - создавать**

**Unique - уникальный**

**To depend (on) – зависеть от**

**Profitable - полезный**

**Workable - рабочий**

**Apartments - квартиры**

<b>To focus (on) - сосредотачиваться</b>	<b>Personal belongings – личные принадлежности</b>
<b>Functionality - функциональность</b>	<b>To select - выбирать</b>
<b>Limitation - ограничение</b>	<b>Staff - сотрудники</b>
<b>To execute - выполнять</b>	<b>To equip - оснащать</b>
<b>Luxury - роскошный</b>	<b>Division - разделение</b>
<b>Interior – внутренний (интерьер)</b>	<b>Separate - отдельный</b>
<b>Public - общественный</b>	<b>Employment - использование</b>
<b>Cuisine - кухня</b>	<b>Partitions - перегородки</b>
<b>Lighting - освещение</b>	<b>Ceiling - потолок</b>
<b>Furniture (furnishings) - мебель</b>	<b>Soundproof - звуконепроницаемый</b>
<b>Smooth – ровный, гладкий</b>	<b>Ergonomics - эргономичный</b>
<b>Proper (зд.) - грамотное</b>	<b>Development - разработка</b>
<b>To highlight - подчеркивать</b>	<b>To accommodate - учитывать</b>
<b>Comfortable - удобный</b>	<b>Disabled - инвалиды</b>
<b>Distractions – отвлекающие детали</b>	<b>Elderly – пожилые люди</b>

**2. Translate into Russian these family words:**

To design – designing – designer; to load – loading; to create – creation; to limit – limitation; luxury – luxurious; to light – lighting; proper – properly; unique – uniqueness; to belong – belongings; to equip – equipment; to divide – division; part – partitions; to develop – development.

**3. Find the English equivalents to the following Russian words in the text:**

Торговый центр, салон красоты, фитнес клуб, находится в атмосфере уюта и красоты, проектирование общественных зданий, высококвалифицированные специалисты, эстетическая привлекательность, сложная трудоемкая работа, функциональность, ограничение в выборе стиля, скучный и однотипный, дизайн связан с атмосферой и кухней, центральное освещение, наполнен светом и воздухом, предметы интерьера имеют простые очертания и цветовая гамма спокойная, плавные легкие линии, грамотное зонирование и звукоизоляция, яркие элементы, символическое разделение пространства (стеклянные стены и перегородки), звуконепроницаемые помещения, должны строго соблюдаться требования эргономики, комплексный подход, организация внутреннего пространства, учитывать потребности посетителей, люди с ограниченными возможностями, пожилые люди, считается одним из самых сложных.

#### ***4. Answer the questions to the text:***

1. What public buildings are there in cities?
2. Why is the creating of interior of public buildings one of the most complex fields of modern design?
3. What does the design of public buildings require?
4. Does success of buildings depend on the design of public space?
5. What differs the design of the flat from the design of the public place?
6. What are the characteristic features of the interior design of restaurants and cafes?
7. What lighting should be there?
8. The style of salons and SPA-centers can be described as minimalism, can't it?
9. Is there a difference between the interior design of the top manager's office and rooms for the staff?
10. The needs of what categories of people have to be accommodated when designing the interiors of public buildings?
11. What does "symbolic division" of office space mean?



**5. Complete the following sentences:**

1. People can't get away from ...
2. Design of public buildings requires ...
3. Success of business depends largely on ...
4. If the interior design of apartments ...
5. In the design of restaurants and cafes the main attention is paid to ...
6. As for the light, the restaurants should have ...
7. Visitors of SPA-centers must have a rest, so ...
8. Proper zoning of floor space in salons, ...
9. For the office it is typical ...
10. In offices nowadays the designers use ...

**6. Agree or disagree with your partner, begin your phrase with "That's right" or "That's wrong":**

1. There's no difference between designing houses and public buildings.
2. Offices should be boring and similar to others.
3. In the design of cafes and restaurants the main attention is paid to the luxury.
4. The cafes usually have central light and small lamps for each table.
5. All the furnishings in SPA-centers have simple ergonomic shapes and their colors are calm.
6. In a top manager's office the furniture should be chosen in accordance with the rules of the organization.
7. All the members of the staff should work in one large room.
8. The main thing for design of interiors of public spaces is to create a comfortable, cozy space.
9. These spaces should be comfortable for the workers.
10. Visitors don't care of the comfort and beauty of office spaces.

**7. Fill in the blanks with necessary prepositions:**

1. People can't get away ... constant visits to shopping malls, beauty salons, fitness clubs, etc.
2. The design of public spaces requires careful work ... everything.
3. Success of business depends largely ... the design of public spaces, which must be profitable and workable.
4. The development of public spaces focuses ... functionality.
5. In the design of restaurants and cafes the main attention is paid ... the relationship of style and cuisine.
6. Its design should be closely connected ... the atmosphere and cuisine of coffee shops or restaurants.
7. The space of salons is filled ... light and air.
8. But clear, graphic lines are replaced ... smooth and easy ones.
9. The difference ... a minimum of distraction and the optimal use of floor space is typical for offices.
10. Current trends in interior of public space are also affected ... fashion as a way of life of people.

**8. Match the kind of the public space and its features.**

<b>Restaurants (cafes)</b>	— Soundproof rooms
	— Bright elements
	— Central lighting and small lamps (for each table)
	— Symbolic division of space (glass walls and partitions)
	— Proper zoning and sound insulation
<b>SPA-centers (salons)</b>	— Typical stylization
	— Functionality and comfort
	— Smooth, easy lines
	— The style is minimalism
	— Relationship of style and cuisine

<b>Office spaces</b>	— Filled with light and air
	— Furniture of simple shapes and calm colors

9. *Fill in the table with the words taken from the text:*

<i>Participle 1</i>	<i>Participle 2</i>	<i>Gerund</i>	<i>Verbal Noun</i>	<i>Infinitive</i>

10. *Retell the text by heart.*

### 3. MODERN TENDENCIES IN INTERIOR DESIGN OF RESIDENTIAL HOUSES

*Picture your dream home, what does it include? Would you love an outdoor fireplace? Or, do you prefer relaxing in a marble whirlpool tub? These features are available for every homeowner today. But, what are the home design trends that are requested to builders over and over?*

Tomorrow's homes are on the drawing board and they are nothing like the designs you remember from your childhood. New materials and new technologies are reshaping the way new homes are being built. Architects and designers are constantly changing their floor plans to accommodate the changing needs and demands of homeowners. Expect homes of the future to be very green and flexible, have added storage, Eastern influences and outdoor living spaces. Here's a list of the top home design building trends homeowners want in their new homes today:



## 1. Luxurious Kitchens and Baths

Homeowners are demanding more functional space in the kitchen. Many new kitchen home designs include a coffee space, baking area, butler's pantry or casual snack bar. Multiple islands are also popular. One island may feature a sink and dishwasher while another may contain a stove. Separating kitchen tasks allows multiple cooks in the kitchen while still maintaining function.



When it comes to the bathroom, homeowners are drawn to a home design with "his and her" everything. Whether it's closets, vanities or separate baths. When it comes to luxury features, waterfall tubs and fireplaces top the list.



## 2. Flexible Floor Plans

Families are yearning for more seamless spaces that allow movement to flow from the indoors out. Sliding and pocket doors help achieve this between rooms and other spaces. Other increasingly popular options are home designs featuring hobby spaces, home offices, and bonus or flex spaces. These types of spaces are adapted to the needs of today's family.<http://houseplansandmore.com/homeplans/houseplan016S-0001.aspx>

Changing lifestyles call for changing living spaces. Look for house plans with flexible spaces, including keeping rooms, lofts, optional bedrooms, home offices and bonus rooms (bonus room is a relatively recent term that is mainly



used in the United States. It is used to describe a large room in a house which could be used as a multi-purpose area. A bonus room, unlike an American bedroom, does not usually contain a closet. A bonus room might be used as a family room, sewing or hobby room, game room, home cinema, office, or den. It is sometimes over a garage or in an attic area with partially reduced ceiling height or some other less desirable characteristic.) Large, multi-purpose, family areas are now replacing living and dining rooms. Flexible floor plans will allow you to enjoy your home today, tomorrow and down the road as your needs change.



### 3. Light-Filled Floor Plans

Natural lighting from skylights, three-season rooms and covered porches are growing in popularity among new home designs. Many of these spaces are now being outfitted with outdoor kitchens, fireplaces, sophisticated sinks and grills helping to draw the family outdoors for more meals and relaxation time.



### 4. Storage, storage and more storage!

Dressing rooms, walk-in closets and built-in cabinets are musts for all home designs now. Even oversized garages are replacing their smaller counterparts of the past, perfect for large SUVs, boats and storage.



Most homes are being designed with enormous walk-in closets, spacious dressing rooms, and plenty of easy-to-reach built-in cabinets. Cathedral ceilings are becoming passé because families tend to prefer usable space below the roof. Garages are also getting bigger to accommodate SUVs, recreational vehicles, workshops and added storage space.

## 5. Earth-friendly homes



Green building means designing, sitting and constructing a home as well as improving the way that homes use energy, water, and materials to provide a healthy living environment. Expect to see new, green technology and products so you can build your dream home without sacrificing aesthetics.

Biodegradable materials and green building techniques are being requested by more and more consumers who are conscious of their surroundings and their well-being.

## 6. Outdoor Living Spaces

One of the biggest trends in home building is creating an outdoor living room. At the center of this design is the swimming pool. You'll find fountains, fireplaces, lighting, bars, kitchens, patios and hot tubs being added to the pool area to create a truly personalized and functional outdoor living space. Architects and designers are now adding these outdoor living spaces to their house plans.



## 7. Accessible Home Designs

Forget the spiral staircases and high cabinets because new homes will be easy to move around in, particularly for members of your family that have physical limitations. Architects often use the phrase «universal design» to describe these homes because they



are comfortable for people of all ages and abilities. Special features such as wide hallways and doors blend seamlessly into the design so that the home does not have the clinical appearance of a hospital or nursing facility.

## 8. Eastern Influences

More and more designers and architects are incorporating Eastern ideas into their home designs, particularly Feng Shui. Simply put, Feng Shui is about creating a harmonious environment with an optimal flow of chi (energy). It's the ancient Chinese Science and Art of placement, intended to improve our health, harmony, longevity, career and wealth.

### *1. Read the words to help you with the text:*

**Homeowner -**

**домовладелец**

**Storage - хранение**

**Fireplace - камин**

**Whirlpool tub - джакузи**

**To demand - требовать**



<b>To bake</b> - печь	<b>Easy-to-reach</b>
<b>A snack bar</b> – бар закусок	<b>Built-in cabinets</b> – встроенный шкаф
<b>A sink</b> - раковина	<b>Biodegradable</b> - биоразлагаемый
<b>A dishwasher</b> – посудомоечная машина	<b>To request</b> - требовать
<b>A stove</b> - плита	<b>A consumer</b> - потребитель
<b>A vanity</b> – туалетный столик	<b>Well-being</b> - благополучие
<b>Sliding doors</b> – раздвижные двери	<b>Indoor (outdoor)</b> – внутри (снаружи)
<b>A pocket</b> - карман	<b>A fountain</b> - фонтан
<b>A loft</b> - чердак	<b>A patio</b> – внутренний дворик
<b>A walk-in closet</b> - гардеробная	<b>A staircase</b> - лестница
<b>A garage</b> - гараж	<b>Nursing</b> – ухаживание (за больным)
<b>An attic</b> -	<b>Harmonious</b> - гармоничный
<b>Ceiling</b> - потолок	-
<b>Flexible</b> - гибкий	
<b>A porch</b> - крыльцо	

## ***2. Read and translate the family words:***

To shape – to reshape, to demand – demanding, to desire – desirable, size – oversized, to surround – surrounding – surroundings, particular – particularly, to limit – limitation, to reduce – reduced.

## ***3. Find in the text the English equivalents of these word combinations:***

Быть непохожим, план этажа, дом мечты, камин, джакузи, собственники жилья, снэк бар, функциональная зона, раздвижные двери и карманы, гибкое



пространство, каминная комната, чердак, дополнительная комната (бонусная), многофункциональное помещение, уменьшенная высота, естественное освещение, веранда, туалетная комната, гардеробная и встроенный шкаф, габаритный гараж, биоразлагаемые материалы, «зеленые» строительные технологии, здоровая окружающая среда, внутренний дворик, винтовая лестница, широкие коридоры.

**4. Answer the questions to the text:**

1. What areas should take place in the kitchen?
2. What does separating kitchen allow to do?
3. What details in the bathroom are the most popular among homeowners?
4. What does «flexible floor plan» mean?
5. What is a bonus room?
6. What spaces should be in a house?
7. What lighting is more preferable in houses now?
8. What spaces for storage are there in houses now?
9. Garages also have storage space, don't they?
10. Are green technologies and biodegradable materials used in residential construction now?
11. What does outdoor living space include?
12. What does «universal design» mean?
13. Does a house for disabled people have special features? What?
14. Is Chinese or Japanese influence so widespread in residential design now?

**5. Complete the following sentences:**



1. Many new kitchen home designs include ...
2. Separating kitchen allows ...
3. Seamless spaces allow ...
4. Popular options of home designs are ...
5. A bonus room might be used as ...
6. Many of the spaces are now being outfitted with ...
7. The musts for all home designs now are ...
8. Garages are also getting bigger ...
9. Biodegradable materials and green building techniques are being requested by ...
10. Forget the spiral staircases and high cabinets because ...
11. Feng Shui is about ...

**6. Fill in the blanks with necessary prepositions:**

1. Some people prefer relaxing ... marble whirlpool tub.
2. One island may feature a sink ... another may contain a stove.
3. Families are yearning ... more seamless spaces.
4. Changing lifestyles call ... changes living spaces.
5. Natural lighting, three season rooms and covered porches are growing ... popularity ... new home designs.
6. Families tend to prefer usable spaces ... the roof.
7. Green building techniques are being requested ... consumers now.
8. ... the center ... the outdoor living room is the swimming pool.
9. Universal design is comfortable ... people of all ages and abilities.
10. Many architects are incorporating East ideas ... their home designs.

**7. Agree or disagree with your partner, begin your phrase with “That’s right” or “That’s wrong”:**

1. Tomorrow’s homes are nothing like the designs from our childhood.
2. Homeowners are demanding more functional space in the kitchen.
3. In the bathroom the only important thing is a bath.
4. Artificial lighting is popular nowadays.
5. One walk-in closet is enough in a house.
6. People prefer small garages to their counterparts.
7. Artificial building materials are widely used in construction and decoration nowadays.
8. The swimming pool is the center of outdoor living room now.
9. A bonus room is a multi-purpose area.
10. Wide hallways and doors are comfortable for disabled people.
11. Feng Shui is intended to improve health, harmony, longevity, career and wealth.

**8. Match the term and its definition:**

<b>Earth friendly home</b>	It’s an area for a particular activity.
<b>Functional space</b>	It’s a bath with hot tubs to relax.
<b>Flexible plan</b>	It’s a special organization of spaces in the house which allows movement to flow between rooms.
<b>Feng Shui</b>	It’s a small room for storage.
<b>Universal Design</b>	It’s a house made of biodegradable materials and in accordance with green building techniques.
<b>Whirlpool tub</b>	It’s a plan of the house which is comfortable for people of all ages and abilities.
<b>Walk-in closet</b>	It’s Chinese Science and Art of placement, intended to create harmonious environment.

9. *Fill in the table with the words taken from the text:*

Participle 1	Participle 2	Gerund	Verbal Noun	Infinitive

10. *Retell the text by heart.*

#### **4. COLORS, TEXTURES AND MATERIALS IN INTERIOR DESIGN TRENDS 2013**

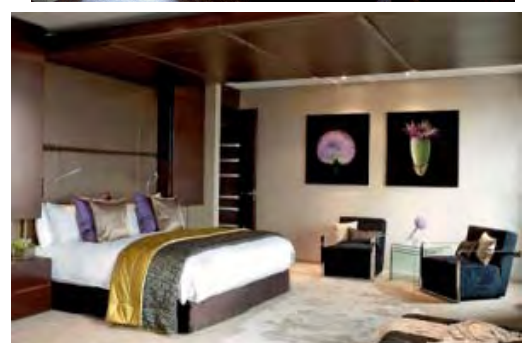
Current economic situation forces people to stay where they live, adding more comfort to their home interiors and creating luxurious and relaxing rooms with impressive, personal and interesting decorating ideas.

Chic design style and comfort themes define interior decorating ideas in 2013. Soft home furnishings, luxurious and pleasant materials, attractive and cheerful colors, comfortable and beautiful furniture design with interesting details help to create welcoming, unique and stylish homes.

##### **Design trends 2013, colors and textures**

Glorious colors, like emerald, ruby, amethyst and sapphire, golden yellow tones and exotic coral shades, vivid turquoise and luscious cream colors, combined with tender ivory, comfortable brown, elegant silver, light gray and warm whites are modern interior design trends for 2013.

Layers of silky fabrics and luxurious wool, the combination of velvet and brick, stainless steel and wood design ideas create



attractive contrasts. Mixing decor accessories, made of natural stone and shiny plastic, metal, wood and fabrics are interesting home decorating ideas that add charm and unique character to contemporary interior design.

Warm and comfortable materials and luxurious finishes are among modern interior design trends for 2013. Marble and wood, leather and glass, wool and high quality plastic designs create light, relaxing and gender neutral home interiors that feel luxurious, inviting and comfortable.



Large mirrors, mirrored tiles, beautiful wallpapers with Swarovski crystals or silver details, that reflect more light into the room, are modern interior design trends for 2013.



Modern paint colors and wallpaper patterns, inspired by natural plants, and beautiful wallpapers, made of leaves add branches, flowers and leaves textures to decorating ideas, offering natural light colors and chic of interior design in eco style.

## Interior design trends 2013, materials

Beautiful combination of traditional, contemporary and exotic materials, various ethnic styles and colors, inspired by African, Asian and Middle Eastern decorating ideas, offer warm, cheerful and stylish interior design. Dark and warm colors, yellow and brown tones, deep color shades of precious and semi-precious stones are modern color design trends for 2013.

Asian style interior design takes its cue from Japanese, Chinese, Korean, Thai, Vietnamese and other Eastern cultures. Asian design influences contemporary interiors with Zen spaces for relaxation, feng shui furniture arrangements, Asian-style



bedding, lacquered boxes or silk Chinoiserie wallpaper. A room could hint at an Eastern influence with a Buddha sculpture and prayer beads, or completely recreate the feel of a traditional Asian room. Asian-style furniture and accessories such as tatami mats, futons, tansu style cabinets, and shoji screens create a Japanese aesthetic, while red lacquer, foo dogs, and paper lanterns add Chinese style.

African interior styles range from rustic to modern. Depending on the region you choose for your interior design inspiration, you can expect to use unique textiles and hand-carved furniture to add an exotic touch to your home.



As relationships between man and nature are primitive, therefore among the main elements of the decor are fur, wood and floral motifs.





The colors of an African theme room must be based on a safari or jungle motif. Black brown, cream and burnt orange colors make great base.

Accessories in the African design play a key role. This may be the shapes of Africans from the dark stone or ebony wood, fruit dishes with ethnic motifs, floor vase with bamboo shoots, tribal masks, colorful pillows, drums. Wood sculptures of African animals are carved of soapstone.

*1. Read the words to help you with the text:*

**Texture** - текстура

**To create** - создавать

**Luxurious** - роскошный

**Relaxing** - расслабляющий

**Emerald** - изумрудный

**Ruby** - рубиновый

**Amethyst** - аметистовый

**Sapphire** - сапфировый

**Coral** - коралловый

**Shade** - оттенок

**Turquoise** - бирюзовый

**Luscious** - сочный

**Cream** - сливки

**Ivory** – слоновая кость

**Silver** - серебряный

**Golden** - золотой

**Fabric** - волокно

**Silky** - шелковый

**Wool** - шерстяной

**Velvet** - вельвет

**Stainless steel** – нержавеющая сталь

**Décor** - декор

**Accessories** - аксессуары

**Contemporary** - современный

**Leather** - кожа

**Mirror** - зеркало

**Tile** - плитка

**Wallpaper** - обои

**Chic** - шик

**Ethnic** - этнический

**Precious** - драгоценный

**Feng Shui** – Фэн Шуй

**Furniture** - мебель

**Lacquered** - лакированный

**Prayer beads - четки**  
**Futons - футоны**  
**Tansu cabinet – шкафы Тансу**  
**Shoji screen – экраны седзи**  
**Lantern - фонарь**  
**Rustic - деревенский**

**Hand-carved - резной**  
**Fur - мех**  
**Floral motifs – цветочные мотивы**  
**Tribe soapstone – племенной  
мыльный камень**

**2. Be sure to read correctly the words from the text:**

African, Asian, Middle Easten, Japanese, Chinese, Korean, Thai, Vietnamese.

**3. Read and translate into Russian these family words:**

To create – creative – creativity, luxury – luxurious, to relax – relaxing – relaxation, silk – silky, to invite – inviting, style – stylish, to depend – depending.

**4. Find in the text the English equivalents of the word combinations:**

Жилые здания, тенденции в проектировании, привлекательные и веселые цвета, удобная мебель, уникальный стильный дом, оттенки кораллового, яркий бирюзовый, цвет слоновой кости, шелк, шерсть и бархат, современный дизайн интерьера, роскошная комната, универсальный стиль, зеркальная плитка, природные тона, драгоценные и полудрагоценные камни, лакированные шкатулки, расстановка мебели по фен шуй, шелковые обои, статуя Будды и четки, аксессуары в азиатском стиле, бумажные фонари, деревенский стиль, резная мебель, основаны на мотивах сафари и джунглей, фигурки из эбонитового дерева, племенные маски и барабаны.

**5. Answer the questions to the text:**

1. What defines interior decorating ideas in 2013?
2. What colors are in fashion in 2013?
3. What unusual contrasts characterize design trends in 2013?
4. Why are mirrors and other reflecting materials used in modern design?
5. Can we say that modern textures are connected with the environment? Why?
6. What are the peculiarities of Asian style?
7. What cultures does Asian style take its cue from?
8. What is Feng Shui?
9. Feng Shui plays an important role in furniture arrangements, doesn't it?
10. Is African style rustic or modern?
11. What elements add an exotic African touch to your home?

**6. Complete the following sentences:**

1. Chic design style and comfort theme will define ...
2. Modern interior design trends for 2013 will be emphasized by such colors as ...
3. Mixing décor accessories, made of natural stone and shiny plastic, metal, wood and fabrics are ...
4. Marble and wood, leather and glass, wool and high quality plastic designs create ...
5. Modern paint colors and wallpaper patterns, inspired by natural plants, ...
6. Beautiful combination of traditional, contemporary and exotic materials ...
7. Asian style in interior design takes its cue from ...
8. Asian style furniture and accessories such as ...
9. In African style you can expect ...
10. The accessories in African style may be ...

**7. Agree or disagree with your partner, begin your phrase with “That’s right” or “That’s wrong”:**

1. Luxury and coziness define interior decorating ideas in 2013.
2. Earth colors are preferable in interior design of the year.
3. Mixing décor accessories is not expected.
4. Relaxing and gender neutral home interiors make feel comfort.
5. Large mirrors and other reflecting surfaces are in trend of 2013.
6. Wallpaper patterns are inspired by natural plants.
7. Designers use ideas of Italian, French and Greek styles.
8. Dealing with Asian style we mean a Japanese one.
9. Asian style furniture and accessories such as tatami mats, futons, tansu style cabinets, and shoji screens create a Japanese aesthetic, while red lacquer, foo dogs, and paper lanterns add Chinese style.
10. Designers use very few elements of African style.

**8. Fill in the table with the words taken from the text:**

<b>COLORS</b>	<b>TEXTURES (TEXTILES)</b>	<b>MATERIALS</b>

**9. Match the style and its elements:**

**ASIAN**

**AFRICAN**

Lacquered boxes, hand-carved furniture, silk Chinoiserie wallpaper, safari prints (or prints with wild animal), Buddha sculpture, prayer beads, tatami mats, shoji screens, floor vase with bamboo shoots, tribal masks, colorful pillows, paper lanterns, red lacquered Foo dogs, futons, tansu style cabinets, drums.

**10. Fill in the blanks with necessary prepositions:**

1. Colors combined ... textures and materials help to create unique and stylish homes.

2. The combination ... velvet and brick creates an attractive contrast.

3. Accessories, made ... natural stone add charm to the interior design.

4. Warm, comfortable materials and luxurious finishes are ... modern interior design trends for 2013.

5. Modern paint colors and wallpaper patterns, inspired ... natural plants add chic ... interior design ... eco style.

6. Asian style interior design takes its cue ... Japanese, Chinese, Korean, Thai, Vietnamese and other Eastern cultures.

7. Spaces ... relaxation also take place in Asian style interior design.

8. Depending ... the region you can expect to use unique textiles and hand-carved furniture to add an exotic touch to your home.

9. The colors of an African theme room must be based on a safari or jungle motif.

**11. Fill in the table with the words taken from the text:**

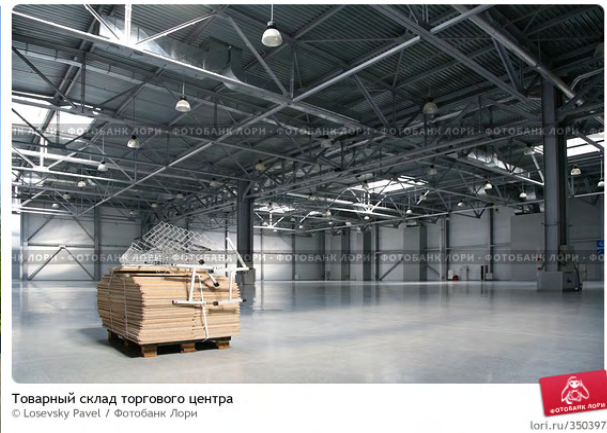
Participle 1	Participle 2	Verbal Noun	Infinitive

**12. Retell the text by heart.**



## 5. DESIGN OF INDUSTRIAL BUILDINGS

Industrial design is a complex technological process including a number of measures to build an industrial object. Design of industrial building projects involves the creation of warehouses and industrial buildings, hangars, factories, parking lots, auto centers and multi-level parking. Design of industrial buildings has several important peculiarities, i.e. peculiarities of soil, building site equipment, infrastructure and landscape adjacent to the territory of the object. Construction of industrial buildings always starts with forming of the project with the selected materials indicated. First of all, a high-quality solid basement must be built, which will help to avoid the cracks and other damages. A comprehensive study and analysis of the soil will help to solve this problem and guarantee the future security of the object. Industrial sites being dangerous for the environment, so the problem of disposal must be seriously considered.



In Industrial Design a detailed scheme of constructed facilities is needed, which aims to work out engineering constructions, as well as transport routes for maximum optimization of the entire workflow. Design of industrial buildings is difficult to imagine without the supporting documentation, which our experts will prepare as soon as possible, in accordance with the norms. Design of industrial buildings is carried out within a few months, during the period the customers can make their own corrections and express wishes. It should be noted that the industrial buildings and structures and their projects are based not only on the preferences of the customer, but also on the Building Standards and Norms. Construction of industrial buildings is made according to the climatic conditions, as well as possible changes in temperature in the area.

## **Designing and construction of industrial buildings and facilities**

Industrial buildings are a basic element of any manufacturing company, where manufacturing facilities, warehouse premises, office and utility rooms as well as auxiliary areas are located. A properly designed industrial building must strictly meet not only the regulatory requirements but also logistics requirements, such a building must fit in the current infrastructure, have high technical and economic parameters assuring capital investment efficiency, it must insure the possibility for further extension of manufacturing scope without shutdown of the plant's technological process.

Industrial buildings designing is based on the future manufacturing process technology. While designing a manufacturing building it is necessary to take into account all conditions of planned technological processes. A project under development must strictly correspond to the manufacturing process purpose, take into account all its process and other specific features. Properly designed engineering utilities and systems assure not only safety and non-stop operation of an enterprise, but also reduce total consumption of energy recourses.

While designing a manufacturing building due attention is paid to up-to-date industrial design both of interior and exterior elements, to use of up-to-date and easy producible materials for buildings facing, to assurance of comfortable working environment inside of a building for working personnel observing all sanitary regulations, aesthetic and other requirements.

Designing of industrial buildings, elaboration of operational documentation is realized in accordance with all technical requirements of normative standard documentation, including:

- SNiP (Construction Norms and Rules) 31-03-2001 Manufacturing buildings
- GOST 27751-88 (ST SEV 384-87) General Principles on Reliability for Structures. Basis of Structural Design
- SNiP 2.03.11-85 Corrosion Protection of Buildings Structures

It becomes comfortable for the staff, aesthetically pleasant and gives the opportunity to use it for meetings, shows and things like that. Meeting rooms can be separated from the conveyer only by the transparent panoramic glass in order to help the visitors see the process of producing something. The designer can start his work at the very start of the construction. Then the designer defines the construction expenditures. The designer understands how to make an attractive construction without growing of the budget.

**1. Read the words to help you with the text:**

**Warehouse – товарный склад**

**Hangar - ангар**

**Parking lots - автостоянка**

**Peculiarity - особенность**

**Adjacent - прилегающий**

**To indicate - показывать**

**Solid - твердый**

**Cracks - трещины**

**Comprehensive - всесторонний**

**Disposal - размещение**

**To consider - учитывать**

**Route - маршрут**

**Premise – помещение**

**Utility - функциональный**

**Auxiliary - вспомогательный**

**To assure - убеждать**

**Extension - расширение**

**Scope - масштаб**

**Shutdown – закрытие**

**Consumption - потребление**

**Personnel - персонал**

**To observe – контролировать**

**Elaboration - разработка**

**Reliability - надежность**

**2. Read and translate into Russian these family words:**

To create — creation — creative — creativity, to construct — construction — constructed, to prefer — preference, to require — requirements, possible — possibility, to extend — extension, to face — facing.

**3. Find in the text the English equivalents of the word combinations:**

Дизайн промышленных зданий, многоуровневая парковка, свойства почвы, прилегающий к объекту, высококачественный фундамент, избежать трещин, всестороннее изучение и анализ, будущая безопасность, транспортные маршруты, в соответствии с нормами, предпочтения заказчика, климатические условия, складские помещения, вписываться в инфраструктуру, убеждать в эффективности инвестиций, масштабы

производства, закрытие предприятия, принять во внимание, строго соответствовать, инженерные сооружения, снижать общие затраты, энергоресурсы, санитарные нормы, обеспечить комфортные условия труда, разработка документации, строительные нормы и правила, общие принципы надежности конструкций.

**4. Answer the questions to the text:**

1. What does the design of industrial buildings involve?
2. What peculiarities does it have?
3. Why is much attention paid to soil and basement?
4. Can the customers make corrections of the design?
5. What facts are taken into account when designing an industrial building?
6. Elaboration of the documents is realized in accordance with Construction Norms and Rules, isn't it?
7. Do expenditures influence the design of construction?
8. Can the walls be transparent?
9. Are industrious sites dangerous or safe for the environment?

**5. Complete the following sentences:**

1. Design of industrial building involves ...
2. Construction of industrial buildings starts with ...
3. Design of industrial buildings is based on ...
4. An industrial building must strictly meet ...
5. While designing an industrial building attention is paid to ...
6. Elaboration of the documents is realized according to ..
7. By construction rules we mean ...
8. Meeting rooms can have transparent walls to ...

**6. Fill in the blanks with necessary prepositions:**

1. Construction of industrial building starts ... forming of the project.
2. Industrial buildings are dangerous ... the environment.
3. Industrial buildings are difficult to imagine ... the supporting documentation.
4. Industrial structures are based ... the preferences of the customer and ... the Building Standards and Norms.
5. Construction is made according ... climatic conditions.



6. It must insure the possibility ... further extension ... manufacturing scope ... shutdown of the plant.

7. ... designing a manufacturing building it is necessary to take ... account all conditions of planned technological processes.

***7. Agree or disagree with your partner, begin your phrase with “That’s right” or “That’s wrong”:***

1. Design of industrial building projects involves the creation of factories only.

2. A high-quality solid basement will help to avoid the cracks and other damages.

3. The customers can’t make their own corrections and express wishes.

4. Industrial buildings and structures and their projects are based only on the preferences of the customer.

5. Construction of industrial buildings is made according to the climatic conditions.

6. A building must fit in the current infrastructure.

7. The total consumption of energy recourses in industrial buildings is very high.

8. Comfortable working environment inside of a building for working personnel comes first.

9. Transparent panoramic glass is used to help the visitors see the process of producing something.

10. General Principles on Reliability for Structures and Construction Norms and Rules are the main documents necessary for construction.

***8. Retell the text by heart.***

Учебное издание

**ДИЗАЙН ИНТЕРЬЕРА И ЭКСТЕРЬЕРА ЗДАНИЙ**  
**MODERN EXTERIOR AND INTERIOR DESIGN**

Учебное пособие

**Романова** Ольга Николаевна, **Корецкая** Майя Константиновна

Публикуется в авторской редакции

Подписано в свет 28.07.2014.

Гарнитура «Таймс». Уч.-изд. л. 1,4. Объем данных 4,6 Мбайт.  
Федеральное государственное бюджетное образовательное учреждение  
высшего профессионального образования  
«Волгоградский государственный архитектурно-строительный университет»  
400074, Волгоград, ул. Академическая, 1  
<http://www.vgasu.ru>, [info@vgasu.ru](mailto:info@vgasu.ru)